

November 2017

K-FLEX



NEWS BULLETIN



K-FLEX® Roncello

Naszemiasto.pl

Naszemiasto.pl

CONTENTS

- 1 **K-FLEX® Roncello new headquarters**
- 2 **K-FLEX® Polska inauguration**
- 3 **Wanda Metropolitan Stadium in Madrid, Spain.**
- 4 **France : New warehouse opening in Metz, eastern France**
- 5 **Russia 2018, world cup stadiums**
- 6 **K-FLEX® USA have launched our new K-FLEX® Titan™ brand.**
- 7 **K-FLEX® UK upgrades extrusion facility**

K-FLEX® News Bulletin
November 2017

- Poland**
Kamil MASZCZYK, Igor POKORSKI
- Russia**
Denis SHEBANOV
- Spain**
Alberto CORBIN
- UK**
Sally JOYCE
- USA**
Nicole CORSI, Matt HAIR
- Italy**
Daniele MARINI
- France**
Cécile CHANTRENNE

FIRST,
THANK YOU ALL
ENJOY READING !

Dear members,

This is our first in-house K-FLEX® news bulletin - we want to share exciting projects and company news with you.

USE OF OUR K-FLEX® TRADEMARK:

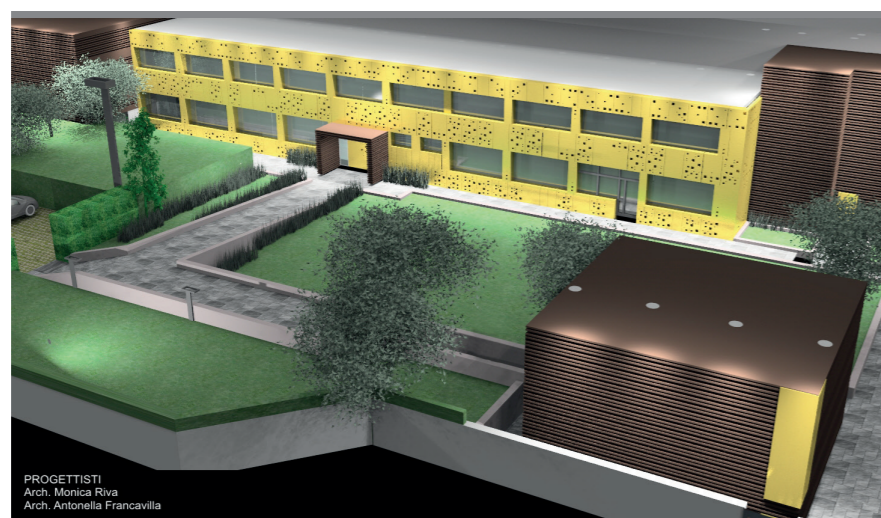
Upon the advice of our trademark attorney and Board of Directors, our trademark K-FLEX should always be used in tandem with ® in all official communications.

However, until the registered trademark for the logo and for logo/K-FLEX combination has been finalised, we recommend writing the word K-FLEX without ®.



NEW HEADQUARTERS

1 | K-FLEX® RONCELLO



PROGETTISTI
Arch. Monica Riva
Arch. Antonella Francavilla

LOCATION

The new headquarters of K-FLEX®, located in the municipality of Roncello (Milan), has an area of 45000 m².

The building, located in the industrial area, is built in compliance with the strictest Safety Requirements and in accordance with Energy Saving Regulations.

AREA

The spaces dedicated to the office and warehouse are as follows:

- Offices: 600 m²
- Products Warehouse: 15600 m²

K-FLEX® is able to store 7000 pallets, which correspond to approximately 43000 cubic meters of finished product.

LOGISTICS

The warehouse uses the MODULA Vertical Storage System. It is an ideal solution for management, fast picking and retrieval of components.

The MODULA system is made to maximize space and flexibility, and is also used for storing high-value products (accessories).

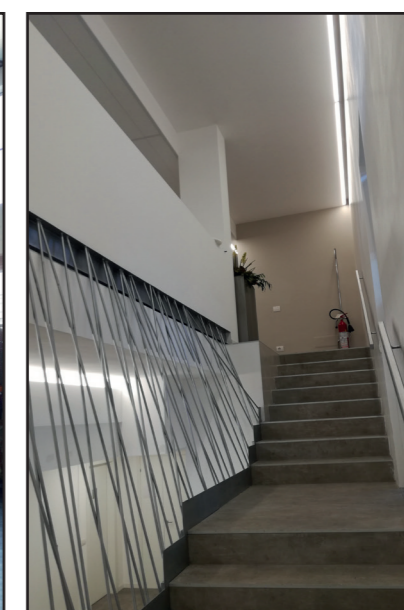
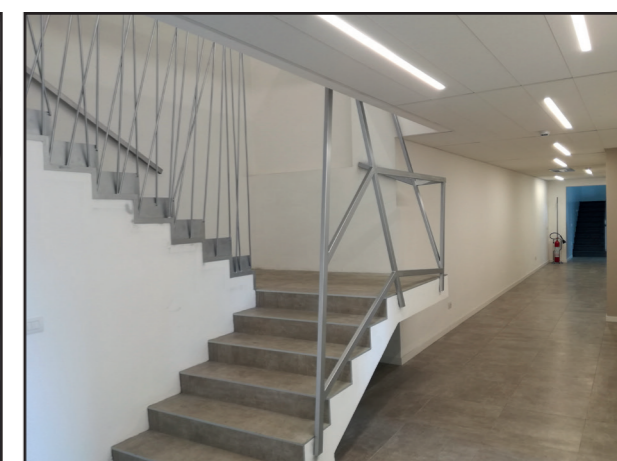
DISTRIBUTION

An area of 900 m² is dedicated to the preparation of materials ready for shipment.

This makes it possible for the despatch area to prepare and load a quantity of material equal to 15 full truckloads per day.



Via Don Locatelli, 35
20877 Roncello (MB)
ITALY



2 | UNIEJÓW NEW WAREHOUSE

K-FLEX® Polska has expanded their plant with the construction of another warehouse.

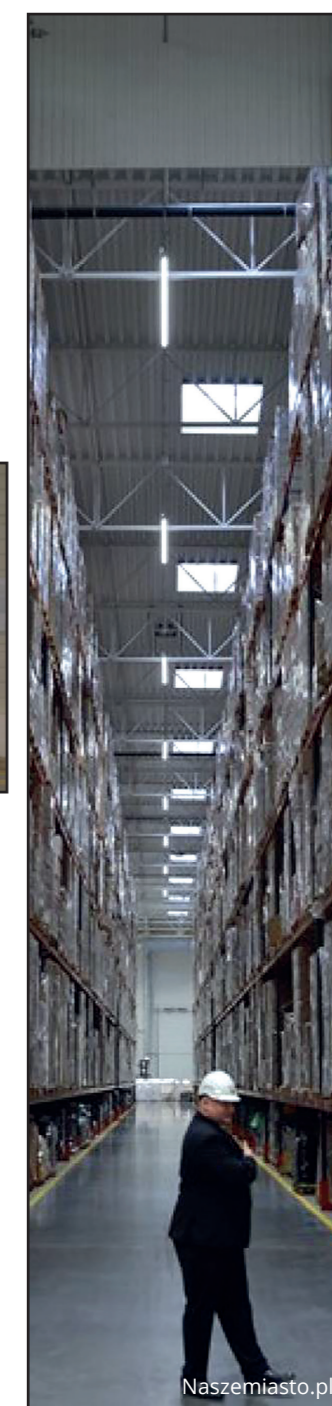
Amedeo Spinelli and Carlo Spinelli carried out the official opening of the new part of the plant at a ceremonial opening, held on October 19th, 2017.



The official opening of the new warehouse was attended by representatives of the parliament and local government, as well as partners from Italy, Germany, France and Russia.



All the guests were introduced to the new part of the plant by Bartłomiej Gröbner - Managing Director.



With the construction of a new warehouse of nearly 16 thousand square meters, employment will increase by nearly 250 people.

Construction of the new 20m high warehouse, began in January this year. At present, there are over 400 employees.

In 2018, K-FLEX® Polska plans to further expand its plant and employ more staff.

3 | WANDA METROPOLITANO STADIUM K-FLEX® INSULATION

The new **WANDA METROPOLITANO** stadium, home of the **Atlético de Madrid Football Club**, was opened on September 16th, 2017, in Madrid, Spain.

The new stadium can hold more than 68,000 spectators, together with 24 multifunctional spaces for conferences, seminars, VIP areas and private boxes - there are also excellent restaurant facilities.

The entire complex has been conceived to offer the optimum in convenience using the latest designs and hi-tech materials, together with the world's top brands such as **K-FLEX®** insulation.



AFP, Agence France-Presse



FOTO Alexander MARIN



FOTO Atlético de Madrid



FOTO Wanda Metropolitano

This great stadium stands out for its concept of modernity, an impressive roof illuminated by LEDs, as well as being an example of sustainable building, having been designed by

Cruz y Ortiz architecture studio, executed by the **FCC** construction company and the clima project has been directed by **JG Ingenieros**.

Wanda Metropolitano will host the final of the Champions League 2019. We hope to see you all there.

4 | HIGH IMPACT OPERATION HIO EAST

SAGI has been investing in a new warehouse in Metz, eastern France, which will be opening on 1st December 2017.

NEW WAREHOUSE

220 000 meters of insulation available on **1st December 2017**

As a result, a High impact operation was organized on **14th - 15th - 16th** November 2017, and covered 5 border departments.

The aim of these 3 days was to inform and present the new warehouse to HVAC companies, installers, engineering consultancies and distributors of this region.

ON THE SPOT

- Vincent THOMAS
- Michel LEFEBVRE, Technical Sales Representative, North - East
- François DESIRE, Head Regional Sales, Center Rhône-Alpes
- Jean-Pierre PENNEC, Head Regional Sales, Paris - Normandie



5 | **RUSSIA 2018**
WORLD CUP
STADIUM

Since the first half of 2012, K-FLEX® Russia has been supplying technical heat insulation for a number of large Russian stadiums : Moscow, Saint-Petersburg, Saransk, Kazan, Ekaterinburg, Sochi...

K-FLEX® products were installed for heating pipes, water supply, air conditioning, ventilation systems, and acoustic insulation.



SAMARA ARENA
Samara,
Capacity 44,900 people.

Products supplied : K-FLEX® ST,
K-FLEX® AIR, K-FLEX® AL CLAD,
K-FONIK ST GK.
Volume : more than 1000 m³



SAINT PETERSBURG
Saint-Petersburg,
Capacity 67,800 people.

Products supplied : K-FLEX® ST,
K-FLEX® AIR, K-FLEX® AL CLAD,
K-FLEX® Supports
Volume : more than 2000 m³



MORDOVIA ARENA
Saransk,
Capacity 45,000 people.

Products supplied : K-FLEX® ST,
K-FLEX® AIR.
Volume : more than 800 m³



EKATERINBURG ARENA
Ekaterinburg,
Capacity 35,000 people.

Product supplied : K-FLEX® ST,
K-FLEX® AL CLAD.
Volume : more than 800 m³



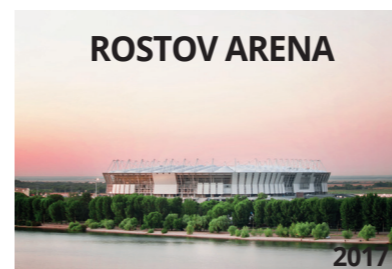
VOLGOGRAD ARENA
Volgograd,
Capacity 45,000 people.

Product supplied : K-FLEX® ST,
K-FLEX® AIR.
Volume : more than 800 m³



NIZHNY NOVGOROD
Nizhny Novgorod,
Capacity 44,900 people.

Product supplied : K-FLEX® ST,
K-FLEX® AIR.
Volume : more than 1500 m³



ROSTOV ARENA
Rostov-on-Don,
Capacity 43,700 people.

Product supplied : K-FLEX® ST
Volume : more than 500 m³



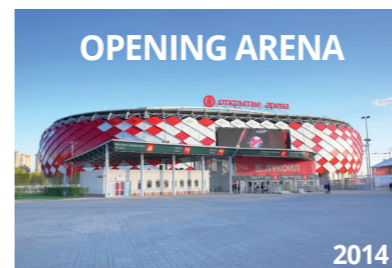
KALININGRAD
Kaliningrad,
Capacity 35,000 people.

Product supplied : K-FLEX® ST
Volume : more than 600 m³



LUZHNIKI
Moscow,
Capacity 81,000 people.

Product supplied : K-FLEX® ST,
K-FLEX® AIR.
Volume : more than 450 m³



OPENING ARENA
Moscow,
Capacity of 45,000 people.

Product supplied : K-FLEX® ST
Volume : more than 300 m³



KAZAN ARENA
Kazan,
Capacity of 45,000 people.

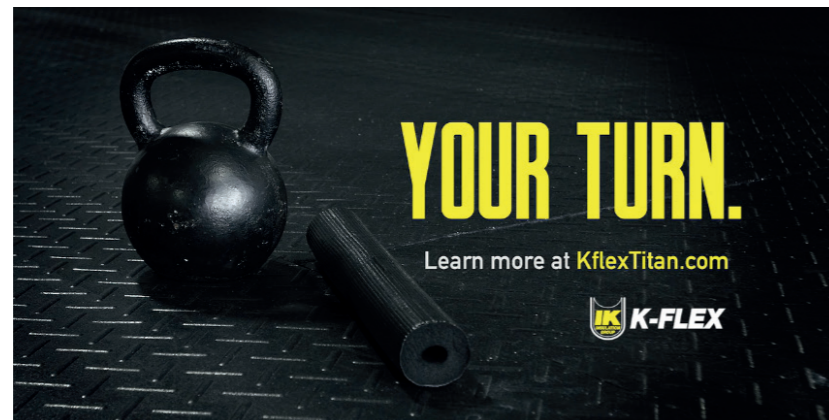
Products supplied : K-FLEX®ST,
K-FLEX AIR®, K-FLEX® AL CLAD
Volume : more than 1300 m³



FISHT
Sochi,
Capacity of 44,000 people.

Products supplied : K-FLEX®ST/SK,
K-FLEX® AIR
Volume : more than 1500 m³

PRESS RELEASE

6 | K-FLEX® TITAN
BRAND**YOUNGSVILLE, N.C. – August 21, 2017**

– K-FLEX® USA, a leading manufacturer of flexible, elastomeric foam insulation, is excited to introduce K-FLEX® Titan™, the company's newest pipe insulation solution for HVAC and refrigeration piping. Encased in a flexible, co-extruded jacketed composite material, K-FLEX® Titan offers excellent flexibility, abrasion and weather resistance, making it ideal for outdoor applications.

"K-FLEX® Titan takes durability to a whole new level," said Giuseppe Guarino, president of K-FLEX® USA. "Not only can it withstand the rigors of installation, but it can hold up to years of harsh conditions. The extreme durability and easy of installation of this product makes it the perfect solution for the distributor, installer and consumer."

K-FLEX® Titan performs on a broad range of metal pipes and tubing used on HVAC line sets and flex hoses while K-FLEX® Titan HT is ideal for use on heat pumps and solar hot water

heating where higher service temperatures are expected. Its proprietary copolymer blend jacket provides excellent protection from weather and mechanical abuse as well as provides exceptional UV resistance, making the insulation well-suited for extreme temperature cycling up to 300°F.

Additionally, K-FLEX® Titan is an extension of, and complement to, K-FLEX® USA's flexible, closed-cell foam elastomeric insulation products. Like all K-FLEX® products, the expanded closed-cell structure and unique formulation inherently resists moisture vapor intrusion. Furthermore, the durable, fiber-free foam resists punctures and won't crack or flake over time.

K-FLEX® Titan is available in .5-inch, .75-inch and 1-inch wall thickness, six-foot length tube form and is made in K-FLEX® USA's ISO 9001 certified manufacturing facility in North Carolina.

UPGRADE OF

7 | EXTRUSION
FACILITY

The UK manufacturing facility has increased extrusion capacity by investing in new plant and additional tooling, now enabling the production of co-extruded two-layer nylon line with colour striping.

This is a major addition to the range of beverage tubing and will enhance the product portfolio.

Investment in tooling and new material development has enhanced the range of pre-formed tubes and trace cooling looms.

K-FLEX

